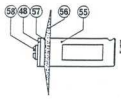
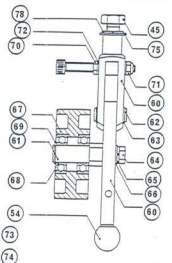
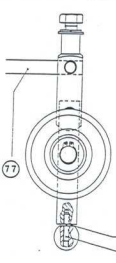
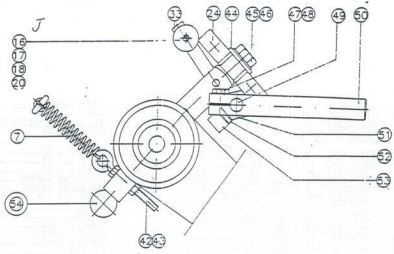


(C)

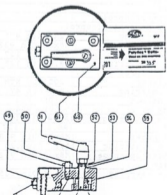
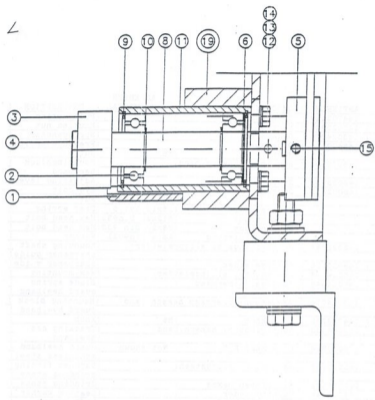
POS.:	ARTIKELNO.:	OMSCHRIJVING	ALGEMEEN UNIVERSAL	DESCRIPTION
5	132004496	Slijpinrichting ass		Sharpening ass.
6	132004450	Haksch.band ass		Heelband tracking ass
7	145020835	Motor 1,1 KW	220-380-415 V. 3 ph. 50/60 HZ	Motor 1,1 KW
7	145020851	Motor 1,1 KW	220 V. 3-60 CSA	Motor 1,1 KW
7	145020860	Motor 1,1 KW	220 V. 1-50 Hz.	Motor 1,1 KW
7	145020878	Motor 1,1 KW	220 V. 1-60 Hz.	Motor 1,1 KW
8	144700328	Trillingsdemper	50x30 B57sh 1xM10	Vibration damper
10	145026400	Trillingsdemper	50x30 B43sh 1xM10	Vibration damper
11	148023908	Bev.blok haksch.band		Mountingblock heelband
12	149233507	Polyflex v-snaar	5Mx335	V-belt
13	148023886	Montageplaat		Mounting plate
14	148023886	Ophangsteun		Support upper
15	148023959	Bevestigings steun		Support bottom
16	145020266	V-snaarschijf	Ø 120	V-pulley
18	149299184	Polyflex v-snaar	7Mx1000	V-belt



K

POS.	ARTIKELNO.	OMSCHRIJVING	ALGEMEEN UNIVERSAL	DESCRIPTION
7	144703220	Trekveer		Full spring
16	145025926	Kartelmoer		Knurled nut
17	148024076	Draadeind		Springanchor
18	145600165	Drukveer		Pressure spring
20		Moer	M6	Nut
24	148023908	Bev. blok haksch.band		Mountingblock heelband
33	148023932	Stelarm		Adjusting lever
42	148002315	Oggbout	M6x 60x 10	Eve bolt
43		Moer	M6 Din 970	Nut
44		Schotelveer	25x12,2x1,5	Disc spring
45		Zeskantbout	M12x20 Din933	Hex.head bolt
47		Zeskantbout	M8x20 Din 933	Hex.head bolt
48		Vlakke sluitring	A8.4 Din9021	Washer
49	148021883	Bevestigings as slijpgeleider		Mounting shaft sharpeners guide
50	148020118	Slijpgeleider		Sharpeners guide
51	148024068	Zeskantbev. slijpgeleider		Hex.mounting
52	148024048	Bladveer schermkap		Blade spring guard heelband
53	148024076	Bev.steun schermkap haksch.band		Mounting block guard heelband
54	144703220	Kogelknop	M6	Knob
(54)	132004380	Achterlooprol haksch.band		Tracking ass. heelband
	138020914	Schermkap RVS	Not shown	Guard heelband stainless steel
55	145020150	Bajonet v. slijpsteen		Bajonet fitting grinding stone
56	200965603	Slijpsteen Naxos		Grinding stone
57	144703249	Vuiring leder		Leather washer
58	144760789	Linkse schroef		Left screw
59	145026094	Draaiarm		Lever
60	145026086	Gaffel		Fork
61	145025322	As achterlooprol		Shaft backstandroll
62	145025730	Draaipunt achterlooprol		Shaft
63		Zekeringsring	12x1 Din 471	Retainingring shaft
64		Zeskantbout	M8x30 Din 933	Hex. head bolt
65		Veerring	A8.1 Din 127	Spring
66		Vlakke sluitring	A8.4 Din 125	Washer
67	144703440	Achterlooprol		Backstandroll
68	142020214	Kogellager	6202 LLU NTM	Ball bearing
69		Zekeringsring	15x1 Din 471	Retainingring
70		Zeskantbout	M6 Din 933	Hex.head bolt
71		Nylock moer	M6 Din 934	Nylock nut
72		Vlakke sluitring	A6.4 Din 125	Washer
73		Veerring	A6.1 Din 127	Spring washer
74		Steischroef	M6x25 Din 913	Set screw
75		Vlakke sluitring	A13 Din 125	Washer
76		Cilinderkopschroef	M8x30 Din 912	Slotted screw
77	145026132	Stelarm		Adjusting lever
78		Enkele veerring	A 6.4 Din 125	Washer

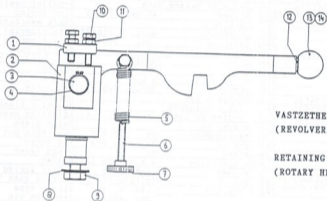
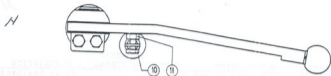
2



M

POS.	ARTIKELNO.	OMSCHRIJVING	ALGEMEEN UNIVERSAL	DESCRIPTION
1	138012130	Geleiding haksch.band		Guide heelband
2	142000418	Kogellager	6004 LLU	Ball bearing
3	144703670	Contactrol Haksch.band		Contactroll Heelband
4	144703688	Linkse schroef		Left screw
5	148021956	V-snaarschijf Haksch.band		V-pulley heelband
6	145026469	Schotelveer	41.6x25.5x0.5	Disc spring
8	148023924	As Haksch.band		Shaft heelband
9		Zekeringsring	42x1.75 Din472	Retainingring
10		Zekeringsring	20x1.2 Din471	Retainingring
11	148022022	Lagerbus		Bearing bush
12		Zeskantbout	M6x20	Hex. head bolt
13		Veerring	M6	Spring
14		Vlakke sluitring	A 6.4	Washer
15		Stelschroef	M6x12 Din 913	Set screw
(19)	132004500	Hakschuurband ass.		Heelband
19	148023908	Bev. blok hakkenband		Mounting block
(47)	138011087	Hevel bediening compl.	pos 48.....62	Adjusting mechan.
48	148022049	Geleidingsblok		Guide block
49		Lage zeskantmoer	M8 Din 439	Hex. thin nut
50		Stelschroef	M8 Din 913	Set screw
51	148000118	Klemhandel	M6	Clamp lever
52		Vlakke sluitring	A 6.4 Din 125	Washer
53		Schotelveer	12x6.2x0.5	Disc spring
54	148022726	Lagerbus "T"	Iglidur "G"	Bearing bush "T"
55		Zware spanbus	1.5x 10 Din 1481	Spring type straight pin
56		Enkele veerring	A 6.1 Din 127	Spring washer
57		Cilinderkopschroef	M6x25 Din 912	Hex sock headscrew
58		Kogel "polyamide"	O 6	Ball "polyamid"
59	148022073	Tandwielas		Gear shaft
60	148022065	Tandwiel		Gear
61	149230702	V-snaar	5Mx307	V-belt
62		Stelschroef	M6x35 Din 913	Set screw
		Komplete set incl.		Complete assembly
		alum. montage plaat		incl. alum. mounting plate

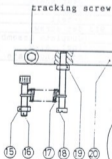
FRAIS ONDERDELEN / TRIMMER PARTS



VASTZETHEVEL
(REVOLVERKOP)

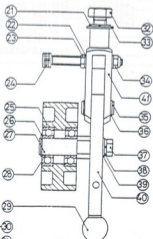
RETAINING LEVER
(ROTARY HEAD)

spoorschroef
cracking screw



ACHTERLOOPROL
(HAKSCHUURBAND)

BACKSTAND
(HEELBAND)



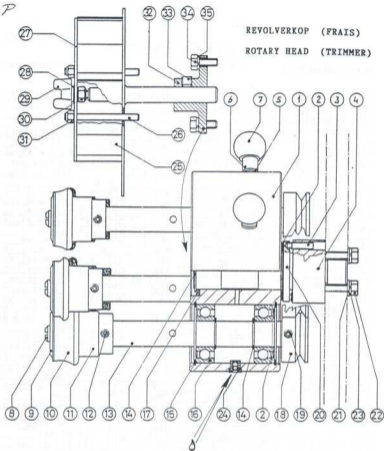
POWER MASTER

FRAIS ONDERDELEN

TRIMMER PARTS

POS.	ARTIKEL.NO.	OMSCHRIJVING	ALGEMEEN UNIVERSAL	DESCRIPTION
1	145025390	Vastzethevel		Retaining lever
2	145026167	Gaffel		Fork
3	145025675	As		Shaft
4		Zekeringsring	15x1,1 DIN 471	Retainingsring
5	145025209	Trekveer	Dm14;d2:L58	Pull spring
6	145025918	Veerhouder		Spring anchor
7	145025926	Hoge kartelmoer	M6 DIN 975	Knurled nut
8	145026230	Schotelveer	25x12,2x1	Disc spring
9		Zeskantbout	DIN 2093	
10		Zeskantbout	M10x25 DIN 933	Hex.head bolt
11		Zeskantmoer	M6x25 DIN 933	Hex.head bolt
12		Enkele veerring	M6 DIN 970	Hexagonal nut
13		Kogelknopmoer	A 6,1 DIN 127	Spring washer
14		Stelschroef	CM6xe25 DIN 319	Ball knob
15	132004003	Vastzethevel	M6x25 DIN 915	Set screw
16		Zeskantmoer	Pos.1.....14	Retaining lever
17	144703505	Cilinderkopschroef	M6 DIN 970	Hexagonal nut
18		Trekveer	M6x30 DIN 912	Hex.sock.headscrew
19		Cilinderkopschroef	Dm10;d1:L42	Pull spring
20	145026132	Zeskantmoer	M6x50 DIN 84	Slotted screw
21		Stelarm	M6 DIN 970	Hexagonal nut
22		Enkele veerring		Adjusting lever
23		Vlakke sluitring	B 12,2 DIN 127	Spring washer
24		Zeskantbout	A 6,4 DIN 125	Washer
25	144703440	Cilinderkopschroef	M6x35 DIN 933	Hex.head bolt
26		Achterlooprol	M8x50 DIN 912	Hex.sock.headscrew
27	145025322	Zekeringsring-as		Backstandroll
28	142020214	As	15x1 DIN 471	Retain.ring-shaft
29	144703220	Kogellager		Shaft
30		Kogelknopmoer	6202 LLU N.T.N.	Ball bearing
31		Enkele veerring	CM6xe25 DIN 319	Knob
32		Stelschroef	A 6,1 DIN 127	Spring washer
33		Zeskantbout	M6x25 DIN 913	Set screw
34		Vlakke sluitring	M12x20 DIN 933	Hex.head bolt
35	145025730	Zelfborgende moer	A 13 DIN 125	Washer
36		As	M6 DIN 934	Nylock nut
37		Zekeringsring-as		Shaft
38		Zeskantbout	12x1 DIN 471	Retain.ring-shaft
39		Enkele veerring	M8x30 DIN 933	Hex.head bolt
40	145026094	Vlakke sluitring	A 8,1 DIN 127	Spring washer
41	145026086	Draaiarm	A 8,4 DIN 125	Washer
	132004034	Gaffel		Lever
		Achterlooprol	Pos.15.....41	Fork
		Schermkap (hak-schuurband)	niet afgebeeld not shown	Backstandroll
				Guard cap (heel-band)

P



- Een druppel olie per maand (voor de centrale as)
- One drop oil per month (for central shaft)
- Ein tropf Öl im Monat (für die zentrale Welle)

2

F R A I S / T R I M M E R

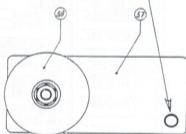
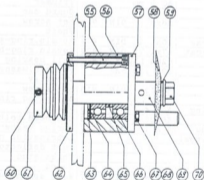
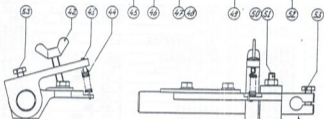
REVOLVERKOP

ROTARY HEA

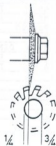
POS.	ARTIKELNO.	OMSCHRIJVING	ALGEMEEN UNIVERSAL	DESCRIPTION
1	144702972	Revolverkop		Rotary trimmer housing
2	144702967	Schotelveer	46,5x30,5x0,6	Disc spring
3		Stelschroef	M6x50 DIN 914	Set screw
4	145026159	Lageras		Bearing shaft
5		Enkele veerring	A 6,1 DIN 127	Spring washer
6	144703211	Blokkeerbout		Catching stud
7	144703220	Kogelknopmoer	CM6x25 DIN 319	Ball knob
8	144701014	Linkse schroef	M8	Left screw
9a	201604256	Sluitplaat	ø 42,5 mm	Shield
9b	201604302	Sluitplaat	ø 43 mm	Shield
9c	201604353	Sluitplaat	ø 43,5 mm	Shield
9d	201604400	Sluitplaat	ø 44 mm	Shield
9e	201604450	Sluitplaat	ø 44,5 mm	Shield
10a	202000206	Fraïsmes	AC 2 mm	Trimmer
10b	202000303	Fraïsmes	AC 3 mm	Trimmer
10c	202000508	Fraïsmes	AC 5 mm	Trimmer
10d	202000702	Fraïsmes	AC 7 mm	Trimmer
10e	202000907	Fraïsmes	AC 9 mm	Trimmer
11	144703106	Beschermkap		Guard cap
12		Stelschroef	M6x6 DIN 912	Set screw
13	145025438	As		Shaft
14		Zekeringsring-as	20x1,2 DIN 471	Retain.ring-shaft
15		Zekeringsring-gat	47x1,75 DIN 472	Retain.ring-bore
16	142020419	Kogellager	6204 LLU N.T.N.	Ball bearing
17	144703009	Fiberring	39,5/30,5x3	Fiberfr.washer
18	145020258	V-snaarschijf		V-pulley
19		Stelschroef	M6x12 DIN 913	Set screw
20	145025500	Stelring		Adjusting ring
21		Vlakke sluitring	A 8,4 DIN 125	Washer
22		Zeskantbout	M8x35 DIN 933	Hex.head bolt
23		Enkele veerring	A 8,1 DIN 127	Spring washer
24	144703238	Inslag smeernippl		Lubrication nipple
25	138010587	Stofgeleiding		Dust deflector
26	148014380	Draadas		Threadstud
27	148010997	Schermplaat		Guard
28		Golfring	B 6,4 DIN 137	Wave spring washer
29		Vleugelschroef	M6x16	Wingscrew
30		Zelfb.zesk.moer	M6 DIN 985	Nylock nut
31		Zelfb.zesk.moer	M5 DIN 985	Nylock nut
	144703092	Stofgeleiding	Pos.25.....31	Dust deflector
32	144703017	Bevestigingsflens		Flange
33		Stelschroef	M8x8 DIN 916 GL	Set screw
34		Zeskantbout	M6x16 DIN 933	Hex.head bolt
35		Enkele veerring	A 6,1 DIN 127	Spring washer
36	-	-	-	-
37	-	-	-	-
38	-	-	-	-
39	-	-	-	-
40	-	-	-	-

R

SLIJPGELEIDER
SHARPENER GUIDE



SPANROL MET SLIJPSTEEN
IDLER WITH GRINDINGSTONE



SLIJPVOORBEELD

GRINDING EXAMPLE

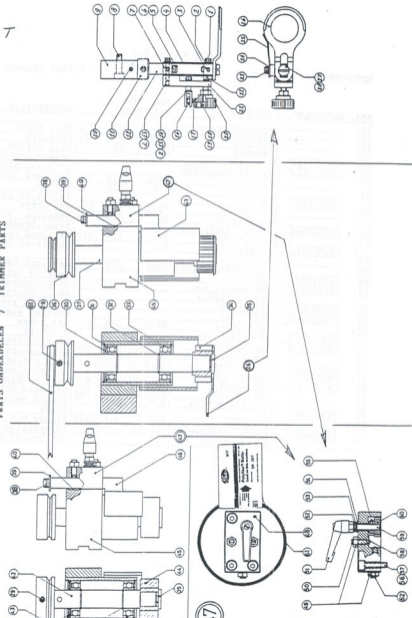
POWER MASTER

REVOLVERFRAIS ONDERDELEN

ROTARY TRIMMER PARTS

POS.	ARTIKELNO.	OMSCHRIJVING	ALGEMEEN UNIVERSAL	DESCRIPTION
41	-	-	-	-
42	-	Vleugelschroef	M6x30 DIN 316	Wing screw
43	-	Splitpen	3x30 DIN 94	Splitpin
44	-	Trekveer	Dm6;dl;L10	Pull spring
45	145025721	Slijpgeleider	-	Trim.sharpener bar
46	145025543	Slijpgeleiderplaat	-	Trim.sh.guide pl.
47	-	Zeskantbout	M6x10 DIN 933	Hex.head bolt
48	-	Sluistring	A 6.4 DIN 125	Washer
49	145025535	Stelarm	-	Adjusting lever
50	-	Stelschroef	M6x20 DIN 915	Set screw
51	-	Zeskantmoer	M6 DIN 970	Hexagonal nut
52	145025748	Aanslag slijpgeleider	-	Mount.bracketguide
53	-	Zeskantbout	M6x20 DIN 933	Hex.head bolt
54	132004011	Slijpgeleider	Pos.42,....,53	Sharpener guide
55	-	-	-	-
56	145025560	Cilinderkopschroef	M5x50 DIN 912	Hex.sock.headscrew
57	145025527	Lagerhuis	-	Bearing housing
58	200965603	Lagerdeksel met bevestigingsas	-	Bearingcover with mount.sharp.guide
59	144705249	Slijpsteen	-	Grinding stone
60	144705249	Leder ring	-	Leather washer
61	145025462	Stelschroef	M6x12 DIN 913	Set screw
62	145025578	V-snaarschijf	-	V-pulley
63	144702967	Lagerdeksel	-	Bearingcover
64	145025985	Zekeringsring-gat	47x1,75 DIN 472	Retainingring-bor
65	145025985	Schotelveer	46,5x30,5x0,6	Disc spring
66	142020410	Afstandsbus	-	Distance bush
67	-	Kogellager	6204 LLU N.T.N.	Ball bearing
68	-	Zeskantbout	M5x16 DIN 933	Hex.head bolt
69	145025667	Enkele veerring	A 5.1 DIN 127	Spring washer
70	-	As	-	Shaft
-	132004020	Flensmoer	M10 DIN 6923	Flange nut
-	-	Spanrol (zonder pcs.57,58,59)	Pos.55,....69	Idlerpulley (with out pos.57,58,59)

FRATS ONDERDELEN / TRIMMER PARTS



T

U

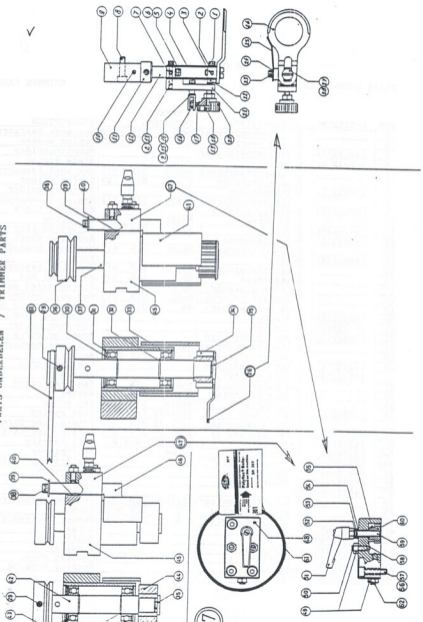
POWER MASTER

FRAIS ONDERDELEN

TRIMMER PARTS

POS.	ARTIKELNO.	OMSCHRIJVING	ALGEMEEN UNIVERSAL	DESCRIPTION
1		Cilinderkopschroef	M4x20 DIN 912	Hex. sock. headscrew
2		Enkele veerring	A 4,1 DIN 127	Spring washer
3	148022154	Bevestigingshouder		Mountingholder
4	148022146	Bladveer		Blade spring
5		Cilinderkopschroef	M5x20 DIN 912	Hex. sock. headscrew
6		Enkele veerring	A 5,1 DIN 127	Spring washer
7	148022162	Afstandhouder		Distance holder
8		Cilinderkopschroef	M6x20 DIN 912	Hex. sock. headscrew
9	148022243	Bevestigingsblok		Mounting block
10		Stelschroef	M6x25 DIN 913	Set screw
11	144704978	Stelring	A 12 DIN 705	Adjusting ring
12	148022251	Bevestigingsas		Mounting shaft
13		Cilinderkopschroef	M4x25 DIN 912	Hex. sock. headscrew
14	148022235	Gaffel		Fork
15		Cilinderkopschroef	M4x16 DIN 912	Hex. sock. headscrew
16		Zeskantmoer	M5 DIN 970	Hexagonal nut
17		Verende drukschr.	M5	Springloaded screw
18		Cilinderkopschroef	M6x25 DIN 912	Hex. sock. headscrew
19		Lage zeskantmoer	M6 DIN 439	Hexagonal thin nut
20	148022200	Stelknop		Adjusting knob
21	148022189	Stelsteun		Adjuster holder
22	148022170	Bevestigingsstrip		Mounting strip
23		Cilinderkopschroef	M4x6 DIN 912	Hex. sock. headscrew
24		Vlakke sluitring	A 4.3 DIN 9021	Washer
25	148022197	Leder spaanscherf		Leather strip
26	148022090	Stilst. sluitpl.		Shield
27		Pan cilinderschr.	M6x16 DIN 85	Pan head screw
28		Vlakke sluitring	A 6,4 DIN 125	Washer
29		Stelschroef	M6x12 DIN 913	Set screw
30	145026464	Schotelveer	41.6x25,5x0,5	Disc spring
31		Zekeringsring-gat	42x1,75 DIN 472	Retain. ring-bore
32		Zekeringsring-as	20x1,2 DIN 471	Retain. ring-shaft
33	142000418	Kogellager	6004 LLU N.T.N.	Ball bearing
34a	202041808	Hakfrails	18 mm	Heeltrimmer
34b	202090183	Hakfrails "Widia"	18 mm	Heeltrimmer "Widia"
35	144703688	Linkse schroef		Left screw
36	148021948	V-snaarschijf		V-pulley
37	148021964	As		Shaft
38		Cilinderkopschroef	M5x10 DIN 912	Hex. sock. headscrew
39		Vlakke sluitring	A 5,3 DIN 9021	Washer
40		Sl. ring "polyamide"	A 4,3 DIN 125	Washer "polyamid"
41	138010471	Geleiding		Guide
42	148021980	As		Shaft
43	148021956	V-snaarschijf		V-pulley
44	144703670	Kontaktschijf		Contact wheel
45	138010609	Lagerhuis		Bearing housing
46	138010340	Geleiding		Guide

FRAIS ONDERDELEN / TRIMMER PARTS



POWER MASTER

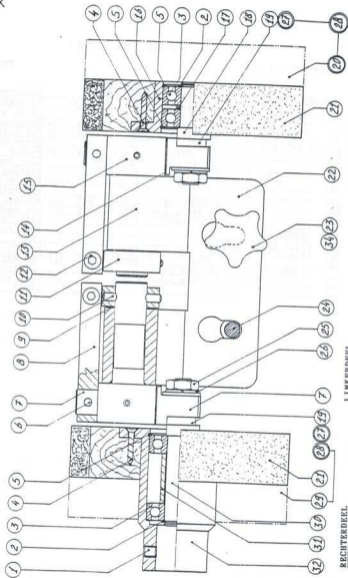
FRAIS ONDERDELEN

TRIMMER PARTS

POS.	ARTIKELNO	OMSCHRIJVING	ALGEMEEN UNIVERSAL	DESCRIPTION
47	138011087	Instelmecanisme	Pos.49,....,60	Adjusting mechan.
48	148022049	Geleidingsblok		Guide block
49		Lage zeskantmoer	M8 DIN 439	Hexagonal thin nut
50		Stelschroef	M8 DIN 913	Set screw
51	148000118	Klemhandel	M6	Clamp nut
52		Vlakke sluitring	A 6.4 DIN 125	Washer
53		Schotelveer	12x6,2x0,5	Disc spring
54	148001726	Lagerbus "T"	Iglidur "G"	Bearing bush "T"
55		Zware spanbus	1,5x10 DIN 1481	Spring type straight pin
56		Enkele veerring	A 6.1 DIN 127	Spring washer
57		cilinderkopschroef	M6x25 DIN 912	Hex.sock.headscrew
58		Kogel "polyamide"	ø 6	Ball "polyamid"
59	148022073	Tandwielas		Gear shaft
60	148022065	Tandwiel		Gear
61	149230702	V-snaar	5Mx307	V-belt
62		Stelschroef	M8x35 DIN 913	Set screw
	132004097	Komplete set incl. alum.montage plaat		Complete assembly incl.alum.mounting plate

SCHURENHEID/SCOURING UNIT

X



RECHTERDEEL

LINKERDEEL
BREED LINKERDEEL

POWER MASTER
POWER STAR
POWER FINISHER
OPTHOOP-FINISHER

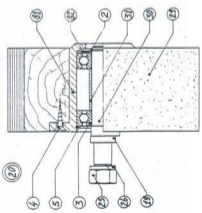
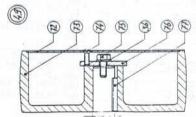
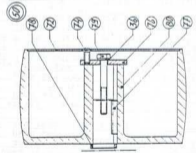
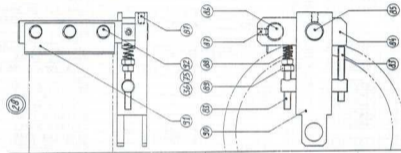
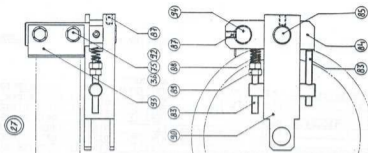
SCHUURENHEID

PM:PS:PF:OF

SCOURING UNIT

POS	ARTIKELNO.	OMSCHRIJVING	ALGEMEEN UNIVERSAL	DESCRIPTION
1		Stelschroef	M8x13 DIN 913	Set screw
2		Zekeringring (as)	20x1,2 DIN 471	Retainingring (shaft)
3	142000418	Kogellager	6204 LLU N.T.N.	Ball bearing
4		Plat verz.houtschr.	5x30 DIN 97	Wood screw
5		Zekeringring (huis)	47x1,75 DIN 472	Retainingring (bore)
6		Cilindr.kerfpen	ø 6x30 DIN1473	Grooved pin
7	145010066	Scharnier as		Hinge shaft
8	145010090	Hefboom		Lever
9		Golfring	ø 21,3 W61480	Wave spring washer
10		Zware spanbus	ø 6x40 DIN1481	Spring type straight pin
11	145010082	Scharnierarm		Hinge lever
12		Cilinderkopschroef	M8x50x50 DIN 912	Hex.socket head screw
13	145010058	Lagerblok		Bearing block
14		Golfring	ø 26,7 W61520	Wave spring washer
15	145010074	As		Shaft
16	144700786	Lagerflens		Bearing flange
17	144700808	Afstandring		Distance ring
18	144798700	Lageras		Bearing shaft
19	148014283	Vulkring		Distance ring
20		Kontakt sch. breed	Pos.81,...,82	Contact wheel
21	140375040	Vilt schijf	ø 170x40	Scouring wheel
22	138010390	Montage frame		Mounting frame
23	145010589	Sterknop	KM10x50 DIN6336	Stargrip
24	145010120	Draadstang		Threaded rod
25		Zeskantmoer	M14 DIN 970	Hexagonal nut
26		Enkele veerring	A 14,2 DIN 127	Spring washer
27a	130000	Schraapeenh.rechts	Pos.83,...,94 40mm	Scrape unit right
27b	130000	Schraapeenh.links	Pos.83,...,94 40mm	Scrape unit left
28a	130000	Schraapeenh.rechts	Pos.83,...,92 75mm	Scrape unit right
28b	130000	Schraapeenh.links	Pos.83,...,92 75mm	Scrape unit left
29	140375082	Vilt schijf (breed)	ø 170x75	Scouring wheel
30	144798697	Lageras		Bearing shaft
31	145010279	Afstandbus		Distance bush
32	145010260	Lagerflens		Bearing flange
33				
34		Lage zeskantmoer	M10 DIN 439	Hexagonal thin nut
35	145010139	Draadbus		Threaded bush
36		Enkele veerring	A 6.1 DIN 127	Spring washer
37		Cilinderkopschroef	M6x20 DIN 912	Hex.socket head screw
38		Zeskantmoer	M12 DIN 970	Hexagonal nut
39	145010112	Spanblok		Stretch block
40		Zeskantbout	M6x30 DIN 931	Hexagonal head bolt
41		Zelfborgende moer	M6 DIN 985	Self-locking hex.nut
42	145010104	Buis		Tube
43	145010155	Trekveer		Pull spring
44	145010163	Afstandbus		Distance bush
45		Zeskantbout	M10x35 DIN 931	Hexagonal head bolt
46	145010554	Drukveer		Push spring
47a	181218330	Schuurband (grof)	40x1650 K24	Sandingbelt (coarse)
47b	181468336	Schuurband (fijn)	40x1650 K120	Sandingbelt (fine)

Z



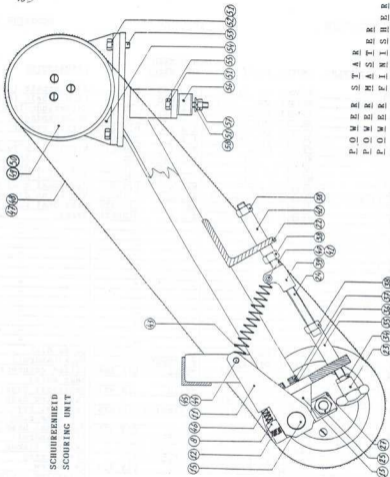
SCHUUREENHEID/SCOURING UNIT
LD/BREED LD/ RD/PM/PS/PF/OF

SCHUURENHEID

PM:PS:PF:OF

SCOURING UNIT

POS	ARTIKELNO.	OMSCHRIJVING	ALGEMEEN UNIVERSAL	DESCRIPTION
48a		Schuurband (grof)	75x1650 K	Sandingbelt (coarse)
48b		Schuurband (fijn)	75x1650 K	Sandingbelt (fine)
49	-	Achterlooprol	Pos.72.....77	Backstandroll
50	-	Achterlooprol	Pos.72.....80	Backstandroll
51		Enkele veerring	A 8,1 DIN 127	Spring washer
52		Vlakke sluitring	A 8,4 DIN 125	Washer
53		Zeskantbout	M8x25 DIN 933	Hexagonal head bolt
54a		Motor 1,1 kW	220V;1Ph;50Hz	Motor 1,1 kW
54b		Motor 1,1 kW	V; Ph; Hz	Motor 1,1 kW
54c		Motor 1,1 kW	V; Ph; Hz	Motor 1,1 kW
55		Zeskantbout	M8x16 DIN 933	Hexagonal head bolt
56	144706113	Trillingdemper "B"	ø 30x20 57° shore	Vibration damper
57		Zeskantmoer	M8 DIN 970	Hexagonal nut
58		Vlakke sluitring	A 8,4 DIN9021	Washer
59	-	-	-	-
60	-	-	-	-
61	-	-	-	-
62	-	-	-	-
63	-	-	-	-
64	-	-	-	-
65	-	-	-	-
66	-	-	-	-
67	-	-	-	-
68	-	-	-	-
69	-	-	-	-
70	-	-	-	-
71	-	-	-	-
72	144700433	Afdichtschijf		cover disk
73	144700409	Achterlooprol	ø 150x55	Backstandroll
74		bol verz.schroef	M5x12 DIN 964	Raised countersunk head screw
75		Zeskantbout	M6x16 DIN 933	Hexagonal head bolt
76	144700417	Bevestigingsschijf		Fastening disk
77		Vlakke inlegspie	A 6x6x30 DIN6885	Parallel key
78	148015786	Vuiring		Distance ring
79		Zeskantbout	M6x50 DIN 931	Hexagonal head bolt
80	145010708	Achterlooprol	ø 150x85	Backstandroll
81	145010899	Lagerflens		Bearing flange
82		Schotelveer	46,5/30,5x0,6	Disk spring
83		Stelschroef	M6x50 DIN 913	Set screw
84	144798778	Stelblok		Adjusting block
85	148014291	As		Shaft
86	144798735	Meshouder		Holder knife
87		Stelschroef	M6x8 DIN 913	Set screw
88		Drukveer	Dm=8;d=1,8;Lo=22	Spring
89		Zeskantmoer	M6 DIN 970	Hexagonal nut
90	144798719	Gaffelblok		Fork
91	144798794	Schraapmes		Scraping knife
92		Vlakke sluitring	A 6,4 DIN 125	Washer
93	144798760	Schraapmes		Scraping knife
94	144798735	Meshouder		Holder knife



SCURENHEID
SCOURING UNIT

P.O.W.E.R. S.T.A.R.
P.O.W.E.R. M.A.S.T.I.S.H.E.R.
P.O.W.E.R. F.I.N.I.S.H.E.R.
O.R.T.H.O.F.I.N.I.S.H.E.R.

Voor handwissel en
handspanning regeling
For beltchange and
tensioning

SCHUUREENHEID

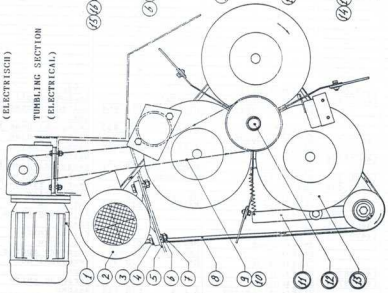
PM;PS;PF;OF

SCOURING UNIT

POS	ARTIKELNO.	OMSCHRIJVING	ALGEMEEN UNIVERSAL	DESCRIPTION
48a		Schuurband (grof)	75x1650 K 24	Sandingbelt (coarse)
48b		Schuurband (fijn)	75x1650 K 120	Sandingbelt (fine)
49	-	Achterlooprol	Pos. 72, ..., 77	Backstandroll
50	-	Achterlooprol	Pos. 72, ..., 80	Backstandroll
51		Enkele veerring	A 8.1 DIN 127	Spring washer
52		Vlakke sluitring	A 8.4 DIN 125	Washer
53		Zeskantbout	M8x25 DIN 933	Hexagonal head bolt
54a		Motor 1,1 kW	220V:1Ph:50Hz	Motor 1,1 kW
54b		Motor 1,1 kW	V: Ph: Hz	Motor 1,1 kW
54c		Motor 1,1 kW	V: Ph: Hz	Motor 1,1 kW
55		Zeskantbout	M8x16 DIN 933	Hexagonal head bolt
56	144706113	Trillingdemper "B"	ø 30x20 57° shore	Vibration damper
57		Zeskantmoer	M8 DIN 970	Hexagonal nut
58		Vlakke sluitring	A 8.4 DIN9021	Washer
59	-	-	-	-
60	-	-	-	-
61	-	-	-	-
62	-	-	-	-
63	-	-	-	-
64	-	-	-	-
65	-	-	-	-
66	-	-	-	-
67	-	-	-	-
68	-	-	-	-
69	-	-	-	-
70	-	-	-	-
71	-	-	-	-
72	144700433	Afdichtschijf		cover disk
73	144700409	Achterlooprol	ø 150x55	Backstandroll
74		bol verz. schroef	M5x12 DIN 964	Raised countersunk head screw
75		Zeskantbout	M6x16 DIN 933	Hexagonal head bolt
76	144700417	Bevestigingsschijf		Fastening disk
77		Vlakke inlegspie	A 6x6x30 DIN6885	Parallel key
78	148015786	Vulring		Distance ring
79		Zeskantbout	M6x50 DIN 931	Hexagonal head bolt
80	145010708	Achterlooprol	ø 150x85	Backstandroll
81	145010899	Lagerflens		Bearing flange
82		Schotelveer	46.5/30.5x0.6	Disk spring
83		Stelschroef	M6x50 DIN 913	Set screw
84	144798778	Stelblok		Adjusting block
85	148014291	As		Shaft
86	144798735	Meshouder		Holder knife
87		Stelschroef	M6x8 DIN 913	Set screw
88		Drukveer	Dm=8;d=1,8;Lo=22	Pressure spring
89		Zeskantmoer	M6 DIN 970	Hexagonal nut
90	144798719	Gaffelblok		Fork
91	144798794	Schraapmes		Scraping knife
92		Vlakke sluitring	A 6.4 DIN 125	Washer
93	144798760	Schraapmes		Scraping knife
94	144798735	Meshouder		Holder knife

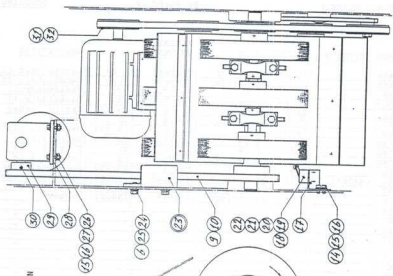
POETSTROMMEL
(ELECTRISCH)

TUMBLING SECTION
(ELECTRICAL)



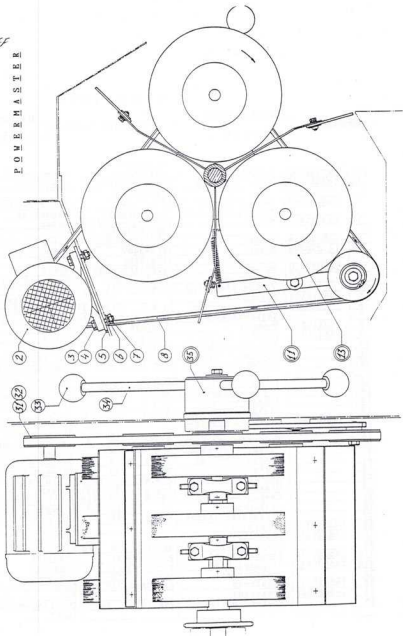
POWER MASTER

22



POETSTROMMEL (HANDDREIENING) / TUMBLING SECTION (HAND ROTATION)

FF



EE

POWER MASTER

POETSTROMMEL } HANDBEDIENING
ELECTRISCH

TUMBLING SECTION } HANDROTATION
ELECTRICALLY

POS.	ARTIKELNO.	OMSCHRIJVING	ALGEMEEN UNIVERSAL	DESCRIPTION
1A	148000258	Motor/reductor	220-380-415V 3Ph;50/60Hz	Motor/reductor
1b	148000266	Motor/reductor + condensator	220-240V 1Ph;50/60Hz	Motor/reductor + capacitor
2a	144761920	Motor	220-380-415V 3Ph;50/60Hz	Motor
2b	145030814	Motor	220/3Ph/60Hz CSA	Motor
2c	145030822	Motor	220-240V 1Ph;50Hz	Motor
2d	145030830	Motor	220V;1Ph;60Hz	Motor
3		Zeskantbout	M8x35 DIN 933	Hex.head bolt
4		Vlakke sluitring	A 8,4 DIN 125	Washer
5	148018122	Motorplaat		Motor plate
6		Enkele veerring	A 8,1 DIN 127	Spring washer
7		Zeskantmoer	M8 DIN 970	Hexagonal nut
8	149317204	V-snaar	13x1676 DIN 2215	V-belt
9	145035980	Ketting	1/2x5/16-105	Chain
10		Ketting schakel	1/2x5/16	Chain link
11	-	V-snaar spanner	Pos.58,....,66	V-belt tensioner
12	-	Poetstrommelas	Pos.74,....,77	Tumblingsection shaft
13	-	Poetstrommel	Pos.37,....,45	Tumblingsection
14		Cilinderkopschroef	M6x16 DIN 912	Hex.sock.headscrew
15		Enkele veerring	A 6,1 DIN 127	Spring washer
16		Vlakke sluitring	A 6,4 DIN 125	Washer
17	148014917	Bevestigingssteun		Mounting bracket
18	144709104	Micro schakelaar		Micro switch
19		Cilinderkopschroef	M4x30 DIN 94	Hex.sock.headscrew
20		Vlakke sluitring	A 4,3 DIN 125	Washer
21		Enkele veerring	A 4,1 DIN 127	Spring washer
22		Zeskantmoer	M4 DIN 970	Hexagonal nut
23	-	Kettingspanner	Pos.68,....,72	Chain tensioner
24		Vlakke sluitring	A 8,4 DIN 9021	Washer
25		Zeskantbout	M8x20 DIN 933	Hex.head bolt
26		Zeskantmoer	M6 DIN 970	Hexagonal nut
27		Cilinderkopschroef	M6x25 DIN 912	Hex.sock.headscrew
28	148018122	Motorplaat		Motor plate
29	148010660	Ketting wiel		Sprocket
30		Stelschroef	M6x10 DIN 913	Set screw
31a	145030130	V-snaarschijf	ø 63 (60Hz)	V-pulley
31b	145030245	V-snaarschijf	ø 92 (50Hz)	V-pulley
32		Stelschroef	M8x8 DIN 913	Set screw
33	145030512	Kogelknop	ø50;CM12 DIN 319	Knob
34	148014828	Trekstang		Rod
35	-	Poetstrommelas	Pos.74,....,90	Tumblingsection shaft
36	-	-	-	-

POWER MASTER

POETSTROMMEL { HANDBEDIENING
ELECTRISCH

TUMBLING SECTION { HANDROTATION
ELECTRICALLY

POS.	ARTIKELNO.	OMSCHRIJVING	ALGEMEEN UNIVERSAL	DESCRIPTION
1A	148000258	Motor/reductor	220-380-415V 3Ph:50/60Hz	Motor/reductor
1b	148000266	Motor/reductor + condensator	220-240V 1Ph:50/60Hz	Motor/reductor + capacitor
2a	144761920	Motor	220-380-415V 3Ph:50/60Hz	Motor
2b	145030814	Motor	220/3Ph/60Hz CSA	Motor
2c	145030822	Motor	220-240V 1Ph:50Hz	Motor
2d	145030830	Motor	220V:1Ph:60Hz	Motor
3		Zeskantbout	M8x35 DIN 933	Hex.head bolt
4		Vlakke sluitring	A 8.4 DIN 125	Washer
5	148018122	Motorplaat		Motor plate
6		Enkele veerring	A 8.1 DIN 127	Spring washer
7		Zeskantmoer	M8 DIN 970	Hexagonal nut
8	149317204	V-snaar	13x1676 DIN 2215	V-belt
9	145035980	Ketting	1/2x5/16-105	Chain
10		Ketting schakel	1/2x5/16	Chain link
11	-	V-snaar spanner	Pos.58.....66	V-belt tensioner
12	-	Poetstrommelas	Pos.74.....77	Tumblingsection shaft
13	-	Poetstrommel	Pos.37.....45	Tumblingsection
14		Cilinderkopschroef	M6x16 DIN 912	Hex.sock.headscrew
15		Enkele veerring	A 6.1 DIN 127	Spring washer
16		Vlakke sluitring	A 6.4 DIN 125	Washer
17	148014917	Bevestigingssteun		Mounting bracket
18	144709104	Micro schakelaar		Micro switch
19		Cilinderkopschroef	M4x30 DIN 84	Hex.sock.headscrew
20		Vlakke sluitring	A 4.3 DIN 125	Washer
21		Enkele veerring	A 4.1 DIN 127	Spring washer
22		Zeskantmoer	M4 DIN 970	Hexagonal nut
23	-	Kettingspanner	Pos.68.....72	Chain tensioner
24		Vlakke sluitring	A 8.4 DIN 9021	Washer
25		Zeskantbout	M8x20 DIN 933	Hex.head bolt
26		Zeskantmoer	M6 DIN 970	Hexagonal nut
27		Cilinderkopschroef	M6x25 DIN 912	Hex.sock.headscrew
28	148018122	Motorplaat		Motor plate
29	148010660	Kettingwiel		Sprocket
30		Stelschroef	M6x10 DIN 913	Set screw
31a	145030130	V-snaarschijf	ø 63 (60Hz)	V-pulley
31b	145030245	V-snaarschijf	ø 92 (50Hz)	V-pulley
32		Stelschroef	M8x8 DIN 913	Set screw
33	145030512	Kogelknop	ø50:CM12 DIN 319	Knob
34	148014828	Trekstang		Rod
35	-	Poetstrommelas	Pos.74.....90	Tumblingsection shaft